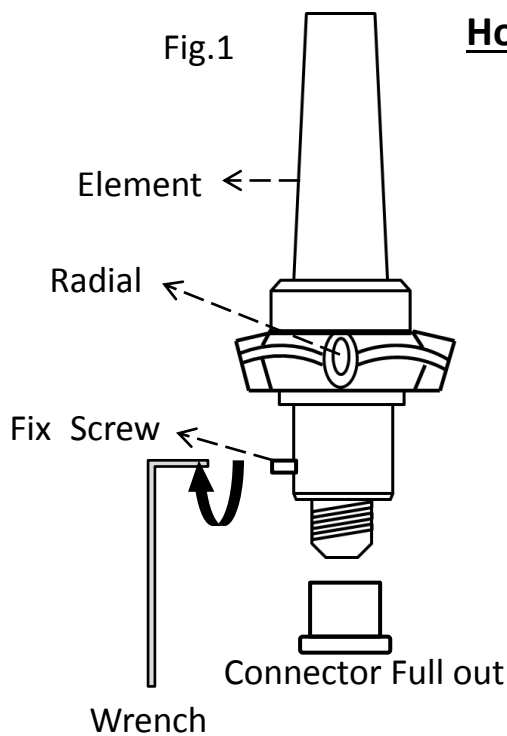


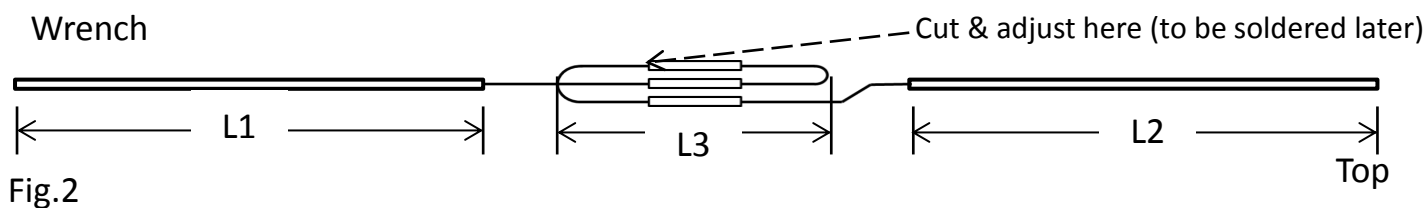
BS-101

INSTALLATION INSTRUCTION



How to Adjust of Model: BS-101

1. Unfasten the Fix-Screw at the low-end of Power Feeding Section. (Fig.1)
2. Then, pull out whole inside Wiring Assembly as shown on Fig.2
3. Please adjust length of L1, L2, and L3, according to the Cutting List. After L3 adjustment, such points are to be soldered correctly.
4. Insert whole Wiring Assembly into the Fiber Element and fasten the Fix Screw tightly.
5. Before insertion, silicone at the connector section will be recommended complete water proof.



Element Cutting Chart

BS – 101 (136-174MHz)

MHz	L1	L2	L3	MHz	L1	L2	L3
137	750	1047	282	154	621	865	265
140.3	721	1000	282	158	603	842	260
141	708	988	282	160.6	593	828	255
144.2	680	949	282	163.3	573	805	255
147.4	666	930	272	166	555	780	255
149	654	912	272	172	537	755	245
151.7	641	895	265	173.5	530	743	245

Length by mm