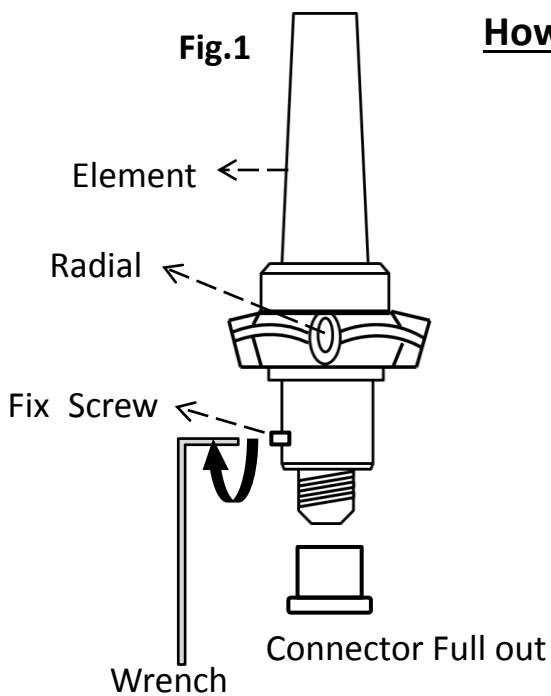


BS-101

INSTALLATION INSTRUCTION

Fig.1



How to Adjust of Model: BS-101

1. Unfasten the Fix-Screw at the low-end of Power Feeding Section. (Fig.1)
2. Then, pull out whole inside Wiring Assembly as shown on Fig.2
3. Please adjust length of L1, L2, and L3, according to the Cutting List. After L3 adjustment, such points are to be soldered correctly.
4. Insert whole Wiring Assembly into the Fiber Element and fasten the Fix Screw tightly.
5. Before insertion, silicone at the connector section will be recommended complete water proof.

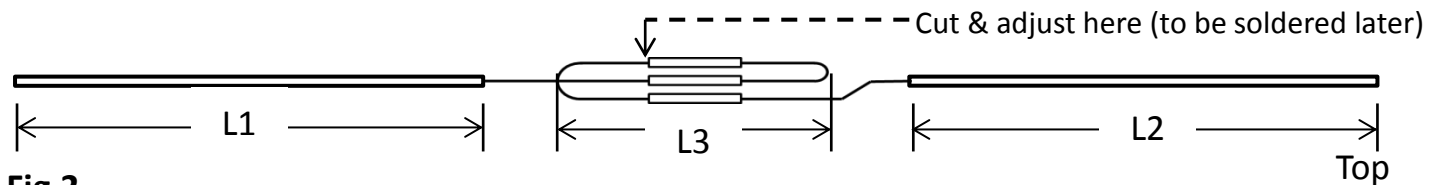


Fig.2

L2(mm)

FG-BS-101U CUTTING CHART

